

Tom Parette
1028 Stone Castle Way
China Grove, N.C. 28023

600 words

tom@tomparette.com

Jerome Project
by Thomas Parette

Contents

Foreword

This book is intended to capture known information about the Jerome/Geroulo family specifically around the first generation to be born in the U.S. This will be a collaboration among family members that can be located spread across the country gathering not only the known genealogy facts but memories of the family members.

The idea is to not only capture the basic facts but as many memories as possible to make them available for future generations of family members. This is a large family and fortunately many of us have memories of our parents, grandparents, aunts and uncles and we should do everything possible to preserve those memories. We will do our best to be

as accurate as possible with the data and recollection we have including information we find on-line.

This document will be available on-line to everyone in PDF format. It will change and evolve over time but updates will be posted on a regular basis at <https://tomparette.com/jeromeproject>

Every attempt will be made to be as accurate as possible but as years have passed and memories have faded, there may be inaccuracies in the document or inconsistencies across those that contribute. We will do our best to make this as accurate as possible with the available facts.

Lastly, this exists only as a result of the efforts of those that contributed. The contributors will be noted in each section where they documented their memories and photos. Thank you for the time taken to contribute to this project.

Project Contributors

Chapter One: Thomas Jerome

Biography

Thomas Jerome



Date of Birth: 8/8/1866

Location of Birth: Muro Lucano Provincia di Potenza

Basilicata Italy

Education

Occupation

Places Lived

Date of Death: 12/11/1952

Burial Location

Supporting Documents

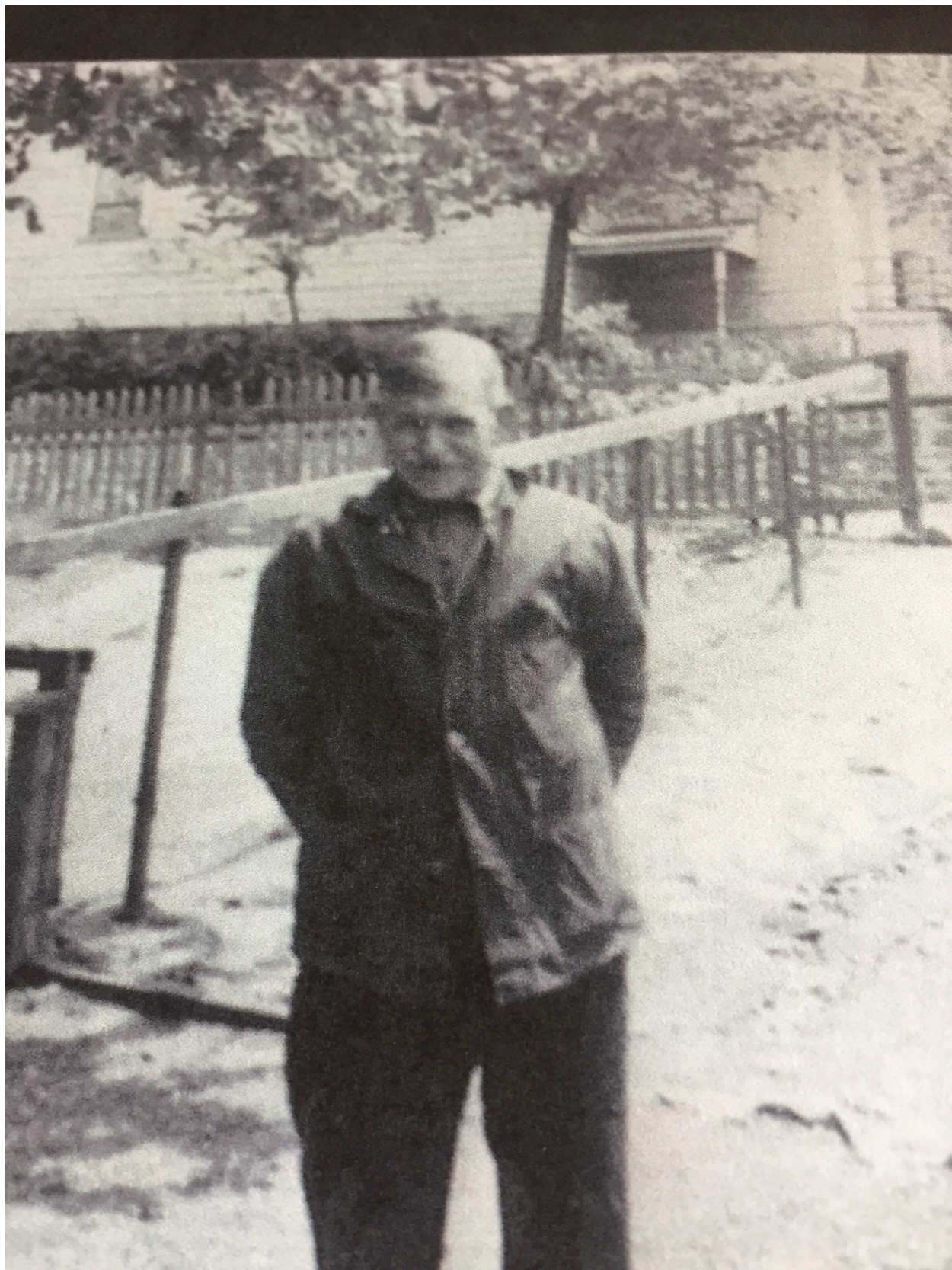
MARGIN RESERVED FOR BINDING
WRITE PLAINLY WITH UNFADING INK—THIS IS A PERMANENT RECORD
N. B.—Every item of information should be carefully supplied. AGE should be stated EXACTLY. PHYSICIANS should state CAUSE OF DEATH in plain terms, so that it may be properly classified. Exact Statement of OCCUPATION is very important.

HVS-20010—800M—1-50 10 COMMONWEALTH OF PENNSYLVANIA
DEPARTMENT OF HEALTH
BUREAU OF VITAL STATISTICS
CERTIFICATE OF DEATH

Primary Dist. No. 3567-312 File No. 104846
Registered No. 166

1. PLACE OF DEATH a. COUNTY <u>LACKAWANNA</u> b. CITY (If outside corporate limits, write RURAL and give township) <u>OLYPHANT</u> c. LENGTH OF STAY (In this place) <u>5448</u> d. FULL NAME OF HOSPITAL OR INSTITUTION <u>544 E. Lacka Ave.</u>		2. USUAL RESIDENCE (Where deceased lived before admission). a. STATE <u>Pa</u> b. COUNTY <u>Decha</u> c. CITY (If outside corporate limits, write RURAL and give township) <u>OLYPHANT</u> d. STREET ADDRESS (If rural, give location) <u>544 E. Lacka Ave.</u>	
3. NAME OF DECEASED (Type or Print) <u>THOMAS JEROME</u> a. (First) <u>THOMAS</u> b. (Middle) <u>JEROME</u> c. (Last) <u>ME</u>		4. DATE OF DEATH (Month) (Day) (Year) <u>DEC.</u> <u>11.</u> <u>1952</u>	
5. SEX <u>M</u>	6. COLOR OR RACE <u>White</u>	7. MARRIED, NEVER MARRIED, WIDOWED, DIVORCED (Specify) <u>Married</u>	8. DATE OF BIRTH <u>Aug 8, 1866</u>
9. AGE (In years last birthday) <u>84</u>		10. BIRTHPLACE (Also give State or foreign country) <u>Italy</u>	
11. BIRTHPLACE (Also give State or foreign country) <u>Italy</u>		12. CITIZEN OF WHAT COUNTRY? <u>U.S. A.</u>	
13. FATHER'S NAME <u>Unknown</u>		14. MOTHER'S MAIDEN NAME <u>Unknown</u>	
15. WAS DECEASED EVER IN U. S. ARMED FORCES? (Yes, no, or unknown) <u>No</u>		16. SOCIAL SECURITY NO. <u>207-05-2319</u>	
17. INFORMANT'S OWN SIGNATURE <u>Rose Jerome</u> ADDRESS <u>544 E. Lacka Ave. Olyphant, Pa.</u>		18. CAUSE OF DEATH Enter only one cause per line for (a), (b), and (c) I. DISEASE OR CONDITION DIRECTLY LEADING TO DEATH* (a) <u>Uremia</u> DUE TO (b) <u>arteriosclerotic cardio-vascular renal disease</u> DUE TO (c) <u>442 X</u> II. OTHER SIGNIFICANT CONDITIONS Conditions contributing to the death but not related to the disease or condition causing death.	
19a. DATE OF OPERATION		19b. MAJOR FINDINGS OF OPERATION	
20. AUTOPSY? YES <input type="checkbox"/> NO <input checked="" type="checkbox"/>		21. HOW DID INJURY OCCUR?	
21a. ACCIDENT SUICIDE HOMICIDE (Specify)		21b. PLACE OF INJURY (e.g., in or about home, farm, factory, street, office bldg., etc.)	
21c. (CITY, TOWN AND TOWNSHIP) (COUNTY) (STATE)		21d. TIME (Month) (Day) (Year) (Hour) (Minute) (Second) m. E.S.T. <u>10:52</u> a.m. <u>Dec. 11, 1952</u>	
21e. INJURY OCCURRED While at Work <input type="checkbox"/> Not While at Work <input checked="" type="checkbox"/>		21f. HOW DID INJURY OCCUR?	
22. I hereby certify that I attended the deceased from <u>Nov. 10, 1952</u> to <u>Dec. 11, 1952</u> and that death occurred at <u>4:30</u> a.m. E.S.T. from the causes and on the date stated above.		23a. SIGNATURE <u>Michael J. Mangotta</u> M.D. or other <u>Michael J. Mangotta</u> ADDRESS <u>Peckville, Pa.</u>	
23b. SIGNATURE <u>Michael J. Mangotta</u> M.D. or other <u>Michael J. Mangotta</u> ADDRESS <u>Peckville, Pa.</u>		23c. DATE SIGNED <u>Dec. 11, 1952</u>	
24a. BUREAU OF HEALTH RECORDS (Specify) <u>Peckville, Pa.</u>		24b. DATE <u>Dec. 15, 1952</u>	
24c. NAME OF CEMETERY OR CREMATORY <u>St. Patrick's</u>		24d. LOCATION (Town, township and county) (State) <u>Peckville, Pa.</u>	
25. SIGNATURE OF FUNERAL DIRECTOR <u>Michael J. Mangotta</u> ADDRESS <u>Peckville, Pa.</u>		25. SIGNATURE OF FUNERAL DIRECTOR <u>Michael J. Mangotta</u> ADDRESS <u>Peckville, Pa.</u>	

Photos



Memories

Chapter Two: Rose Jerome

Biography

Rose Damiano Jerome



Date of Birth

Location of Birth

Education

Occupation

Places Lived

Date of Death

Burial Location

Supporting Documents

Photos

Memories

Chapter Three: Joseph Damiano

Biography

Giuseppe (Joseph) Damiano



Date of Birth

Location of Birth

Education

Occupation

Places Lived

Date of Death

Burial Location

Supporting Documents

Photos

Memories

Chapter Four: Family, Household Information

Photos

1939 Family Reunion



1945 Family Reunion



COUNTY		DEPARTMENT OF COMMERCE AND LABOR-BUREAU OF THE CENSUS										279	SUPERVISOR'S DISTRICT NO.		522	SHEET NO.		14	A
TOWNSHIP OR OTHER DIVISION OF COUNTY		THIRTEENTH CENSUS OF THE UNITED STATES: 1910-POPULATION										ENUMERATION DISTRICT NO.		47	WARD OF CITY		47	CITY	
NAME OF INSTITUTION		ENUMERATED BY ME ON THE 15th										DATE OF		1910	Census		BY		1910
INSTITUTION	NAME	YEAR	RELIGION	PERSONAL DESCRIPTIONS	ADULTS	Females of 16 years and over of this race	Females of 16 years and over of this race	Females of 16 years and over of this race	Females of 16 years and over of this race	Females of 16 years and over of this race	Females of 16 years and over of this race	Females of 16 years and over of this race	Females of 16 years and over of this race	Females of 16 years and over of this race	Females of 16 years and over of this race	Females of 16 years and over of this race	Females of 16 years and over of this race	Females of 16 years and over of this race	Females of 16 years and over of this race
1	280-281	Northwestern California	white	1910 194 12 2	English	English	English	English	English	English	English	English	English	English	English	English	English	English	English
2	282-283	John	white	1910 12 2	English	English	English	English	English	English	English	English	English	English	English	English	English	English	English
3	284-285	Edwin	white	1910 12 2	English	English	English	English	English	English	English	English	English	English	English	English	English	English	English
4	286-287	James	white	1910 12 2	English	English	English	English	English	English	English	English	English	English	English	English	English	English	English
5	288-289	James	white	1910 12 2	English	English	English	English	English	English	English	English	English	English	English	English	English	English	English
6	290-291	James	white	1910 12 2	English	English	English	English	English	English	English	English	English	English	English	English	English	English	English
7	292-293	James	white	1910 12 2	English	English	English	English	English	English	English	English	English	English	English	English	English	English	English
8	294-295	James	white	1910 12 2	English	English	English	English	English	English	English	English	English	English	English	English	English	English	English
9	296-297	James	white	1910 12 2	English	English	English	English	English	English	English	English	English	English	English	English	English	English	English
10	298-299	James	white	1910 12 2	English	English	English	English	English	English	English	English	English	English	English	English	English	English	English
11	300-301	James	white	1910 12 2	English	English	English	English	English	English	English	English	English	English	English	English	English	English	English
12	302-303	James	white	1910 12 2	English	English	English	English	English	English	English	English	English	English	English	English	English	English	English
13	304-305	James	white	1910 12 2	English	English	English	English	English	English	English	English	English	English	English	English	English	English	English
14	306-307	James	white	1910 12 2	English	English	English	English	English	English	English	English	English	English	English	English	English	English	English
15	308-309	James	white	1910 12 2	English	English	English	English	English	English	English	English	English	English	English	English	English	English	English
16	310-311	James	white	1910 12 2	English	English	English	English	English	English	English	English	English	English	English	English	English	English	English
17	312-313	James	white	1910 12 2	English	English	English	English	English	English	English	English	English	English	English	English	English	English	English
18	314-315	James	white	1910 12 2	English	English	English	English	English	English	English	English	English	English	English	English	English	English	English
19	316-317	James	white	1910 12 2	English	English	English	English	English	English	English	English	English	English	English	English	English	English	English
20	318-319	James	white	1910 12 2	English														

1920 Census

STATE Pennsylvania COUNTY Lackawanna TOWNSHIP OR OTHER DIVISION OF COUNTY Jerome NAME OF INSTITUTION None

DEPARTMENT OF COMMERCE-BUREAU OF THE CENSUS
FOURTEENTH CENSUS OF THE UNITED STATES: 1920-POPULATION

NAME OF INCORPORATED PLACE Jerome ENGENERATED BY ME ON THE 12 DAY OF January, 1920.

SUPERVISOR'S DISTRICT No. 9 SHEET No. 651
ENUMERATOR DISTRICT No. 92 B
WARD OF CITY Joseph E. Kelly ENUMERATOR 90

PLACE OF BIRTH	NAME	RELATION	SEX	AGE	MARRIAGE	EDUCATION	NATIVITY AND MOTHER TONGUE			OCCUPATION
							Place of birth	Mother tongue	Place of birth	
51	Proctor, Martha	Wife	F	18	5	20	Germany	German	None	
52	Proctor, George	Head	M	18	5	20	Germany	German	None	
53	Proctor, John	Wife	F	18	5	20	Germany	German	None	
54	Proctor, John	Wife	F	18	5	20	Germany	German	None	
55	Proctor, John	Wife	F	18	5	20	Germany	German	None	
56	Proctor, John	Wife	F	18	5	20	Germany	German	None	
57	Proctor, John	Wife	F	18	5	20	Germany	German	None	
58	Proctor, John	Wife	F	18	5	20	Germany	German	None	
59	Proctor, John	Wife	F	18	5	20	Germany	German	None	
60	Proctor, John	Wife	F	18	5	20	Germany	German	None	
61	Proctor, John	Wife	F	18	5	20	Germany	German	None	
62	Proctor, John	Wife	F	18	5	20	Germany	German	None	
63	Proctor, John	Wife	F	18	5	20	Germany	German	None	
64	Proctor, John	Wife	F	18	5	20	Germany	German	None	
65	Proctor, John	Wife	F	18	5	20	Germany	German	None	
66	Proctor, John	Wife	F	18	5	20	Germany	German	None	
67	Proctor, John	Wife	F	18	5	20	Germany	German	None	
68	Proctor, John	Wife	F	18	5	20	Germany	German	None	
69	Proctor, John	Wife	F	18	5	20	Germany	German	None	
70	Proctor, John	Wife	F	18	5	20	Germany	German	None	
71	Proctor, John	Wife	F	18	5	20	Germany	German	None	
72	Proctor, John	Wife	F	18	5	20	Germany	German	None	
73	Proctor, John	Wife	F	18	5	20	Germany	German	None	
74	Proctor, John	Wife	F	18	5	20	Germany	German	None	
75	Proctor, John	Wife	F	18	5	20	Germany	German	None	
76	Proctor, John	Wife	F	18	5	20	Germany	German	None	
77	Proctor, John	Wife	F	18	5	20	Germany	German	None	
78	Proctor, John	Wife	F	18	5	20	Germany	German	None	
79	Proctor, John	Wife	F	18	5	20	Germany	German	None	
80	Proctor, John	Wife	F	18	5	20	Germany	German	None	
81	Proctor, John	Wife	F	18	5	20	Germany	German	None	
82	Proctor, John	Wife	F	18	5	20	Germany	German	None	
83	Proctor, John	Wife	F	18	5	20	Germany	German	None	
84	Proctor, John	Wife	F	18	5	20	Germany	German	None	
85	Proctor, John	Wife	F	18	5	20	Germany	German	None	
86	Proctor, John	Wife	F	18	5	20	Germany	German	None	
87	Proctor, John	Wife	F	18	5	20	Germany	German	None	
88	Proctor, John	Wife	F	18	5	20	Germany	German	None	
89	Proctor, John	Wife	F	18	5	20	Germany	German	None	
90	Proctor, John	Wife	F	18	5	20	Germany	German	None	
91	Proctor, John	Wife	F	18	5	20	Germany	German	None	
92	Proctor, John	Wife	F	18	5	20	Germany	German	None	
93	Proctor, John	Wife	F	18	5	20	Germany	German	None	
94	Proctor, John	Wife	F	18	5	20	Germany	German	None	
95	Proctor, John	Wife	F	18	5	20	Germany	German	None	
96	Proctor, John	Wife	F	18	5	20	Germany	German	None	
97	Proctor, John	Wife	F	18	5	20	Germany	German	None	
98	Proctor, John	Wife	F	18	5	20	Germany	German	None	
99	Proctor, John	Wife	F	18	5	20	Germany	German	None	
100	Proctor, John	Wife	F	18	5	20	Germany	German	None	

[illegible]

1930 Census

State Connecticut Incorporated place Shelton Branch DEPARTMENT OF COMMERCE-BUREAU OF THE CENSUS
County Litchfield Ward of city 4th FIFTIETH CENSUS OF THE UNITED STATES: 1930
Township or other division of county Shelton Black No. 1 POPULATION SCHEDULE
Enumerated by me on Apr 1, 1930, J. H. Jucker

PLACE OF BIRTH	NAME	RELATION	HOME DATA	PERSONAL DESCRIPTION	EDUCATION	PLACE OF BIRTH	INDUSTRY, TRADE OR SERVICE	INDUSTRY, TRADE OR SERVICE	OCCUPATION AND INDUSTRY	DATE	EMPLOYMENT	REMARKS
1	2	3	4	5	6	7	8	9	10	11	12	13
1	Walter Jones	son		M 10 3 3	12 12 12	Connecticut	Farmer	Farmer	Farmer	1902	1902	1902
2	Walter Jones	son		M 10 3 3	12 12 12	Connecticut	Farmer	Farmer	Farmer	1902	1902	1902
3	Walter Jones	son		M 10 3 3	12 12 12	Connecticut	Farmer	Farmer	Farmer	1902	1902	1902
4	Walter Jones	son		M 10 3 3	12 12 12	Connecticut	Farmer	Farmer	Farmer	1902	1902	1902
5	Walter Jones	son		M 10 3 3	12 12 12	Connecticut	Farmer	Farmer	Farmer	1902	1902	1902
6	Walter Jones	son		M 10 3 3	12 12 12	Connecticut	Farmer	Farmer	Farmer	1902	1902	1902
7	Walter Jones	son		M 10 3 3	12 12 12	Connecticut	Farmer	Farmer	Farmer	1902	1902	1902
8	Walter Jones	son		M 10 3 3	12 12 12	Connecticut	Farmer	Farmer	Farmer	1902	1902	1902
9	Walter Jones	son		M 10 3 3	12 12 12	Connecticut	Farmer	Farmer	Farmer	1902	1902	1902
10	Walter Jones	son		M 10 3 3	12 12 12	Connecticut	Farmer	Farmer	Farmer	1902	1902	1902
11	Walter Jones	son		M 10 3 3	12 12 12	Connecticut	Farmer	Farmer	Farmer	1902	1902	1902
12	Walter Jones	son		M 10 3 3	12 12 12	Connecticut	Farmer	Farmer	Farmer	1902	1902	1902
13	Walter Jones	son		M 10 3 3	12 12 12	Connecticut	Farmer	Farmer	Farmer	1902	1902	1902
14	Walter Jones	son		M 10 3 3	12 12 12	Connecticut	Farmer	Farmer	Farmer	1902	1902	1902
15	Walter Jones	son		M 10 3 3	12 12 12	Connecticut	Farmer	Farmer	Farmer	1902	1902	1902
16	Walter Jones	son		M 10 3 3	12 12 12	Connecticut	Farmer	Farmer	Farmer	1902	1902	1902
17	Walter Jones	son		M 10 3 3	12 12 12	Connecticut	Farmer	Farmer	Farmer	1902	1902	1902
18	Walter Jones	son		M 10 3 3	12 12 12	Connecticut	Farmer	Farmer	Farmer	1902	1902	1902
19	Walter Jones	son		M 10 3 3	12 12 12	Connecticut	Farmer	Farmer	Farmer	1902	1902	1902
20	Walter Jones	son		M 10 3 3	12 12 12	Connecticut	Farmer	Farmer	Farmer	1902	1902	1902
21	Walter Jones	son		M 10 3 3	12 12 12	Connecticut	Farmer	Farmer	Farmer	1902	1902	1902
22	Walter Jones	son		M 10 3 3	12 12 12	Connecticut	Farmer	Farmer	Farmer	1902	1902	1902
23	Walter Jones	son		M 10 3 3	12 12 12	Connecticut	Farmer	Farmer	Farmer	1902	1902	1902
24	Walter Jones	son		M 10 3 3	12 12 12	Connecticut	Farmer	Farmer	Farmer	1902	1902	1902
25	Walter Jones	son		M 10 3 3	12 12 12	Connecticut	Farmer	Farmer	Farmer	1902	1902	1902
26	Walter Jones	son		M 10 3 3	12 12 12	Connecticut	Farmer	Farmer	Farmer	1902	1902	1902
27	Walter Jones	son		M 10 3 3	12 12 12	Connecticut	Farmer	Farmer	Farmer	1902	1902	1902
28	Walter Jones	son		M 10 3 3	12 12 12	Connecticut	Farmer	Farmer	Farmer	1902	1902	1902
29	Walter Jones	son		M 10 3 3	12 12 12	Connecticut	Farmer	Farmer	Farmer	1902	1902	1902
30	Walter Jones	son		M 10 3 3	12 12 12	Connecticut	Farmer	Farmer	Farmer	1902	1902	1902
31	Walter Jones	son		M 10 3 3	12 12 12	Connecticut	Farmer	Farmer	Farmer	1902	1902	1902
32	Walter Jones	son		M 10 3 3	12 12 12	Connecticut	Farmer	Farmer	Farmer	1902	1902	1902
33	Walter Jones	son		M 10 3 3	12 12 12	Connecticut	Farmer	Farmer	Farmer	1902	1902	1902
34	Walter Jones	son		M 10 3 3	12 12 12	Connecticut	Farmer	Farmer	Farmer	1902	1902	1902
35	Walter Jones	son		M 10 3 3	12 12 12	Connecticut	Farmer	Farmer	Farmer	1902	1902	1902
36	Walter Jones	son		M 10 3 3	12 12 12	Connecticut	Farmer	Farmer	Farmer	1902	1902	1902
37	Walter Jones	son		M 10 3 3	12 12 12	Connecticut	Farmer	Farmer	Farmer	1902	1902	1902
38	Walter Jones	son		M 10 3 3	12 12 12	Connecticut	Farmer	Farmer	Farmer	1902	1902	1902
39	Walter Jones	son		M 10 3 3	12 12 12	Connecticut	Farmer	Farmer	Farmer	1902	1902	1902
40	Walter Jones	son		M 10 3 3	12 12 12	Connecticut	Farmer	Farmer	Farmer	1902	1902	1902
41	Walter Jones	son		M 10 3 3	12 12 12	Connecticut	Farmer	Farmer	Farmer	1902	1902	1902
42	Walter Jones	son		M 10 3 3	12 12 12	Connecticut	Farmer	Farmer	Farmer	1902	1902	1902
43	Walter Jones	son		M 10 3 3	12 12 12	Connecticut	Farmer	Farmer	Farmer	1902	1902	1902
44	Walter Jones	son		M 10 3 3	12 12 12	Connecticut	Farmer	Farmer	Farmer	1902	1902	1902
45	Walter Jones	son		M 10 3 3	12 12 12	Connecticut	Farmer	Farmer	Farmer	1902	1902	1902
46	Walter Jones	son		M 10 3 3	12 12 12	Connecticut	Farmer	Farmer	Farmer	1902	1902	1902
47	Walter Jones	son		M 10 3 3	12 12 12	Connecticut	Farmer	Farmer	Farmer	1902	1902	1902
48	Walter Jones	son		M 10 3 3	12 12 12	Connecticut	Farmer	Farmer	Farmer	1902	1902	1902
49	Walter Jones	son		M 10 3 3	12 12 12	Connecticut	Farmer	Farmer	Farmer	1902	1902	1902
50	Walter Jones	son		M 10 3 3	12 12 12	Connecticut	Farmer	Farmer	Farmer	1902	1902	1902

1940 Census

[illegible]

Chapter Five: Joseph Jerome

Biography

Date of Birth

Location of Birth

Education

Occupation

Places Lived

Date of Death

Burial Location

Spouse:

Children

Supporting Documents

Photos

Memories

Chapter Six: Francis P. Jerome

Biography

Date of Birth

Location of Birth

Education

Occupation

Places Lived

Date of Death

Burial Location

Spouse:

Children

Supporting Documents

Photos

Memories

Chapter Seven: William Jerome

Biography

Date of Birth

Location of Birth

Education

Occupation

Places Lived

Date of Death

Burial Location

Spouse:

Children

Supporting Documents

Photos

Memories

Chapter Eight: James Jerome

Biography

James J Jerome



Date of Birth

Location of Birth

Education

Occupation

Places Lived

Date of Death

Burial Location

Spouse:

Children

Supporting Documents

Photos

Memories

Chapter Nine: Thomas Jerome

Biography

Thomas Jerome



Date of Birth

Location of Birth

Education

Occupation

Places Lived

Date of Death

Burial Location

Spouse:

Children

Supporting Documents

Biography

Photos

Memories

Chapter Ten: Michael Jerome

Biography

Michael Jerome



Date of Birth: 9/10/1903

Location of Birth

Education

Occupation: Undertakers Assistant

Places Lived

Date of Death: 8/24/1936

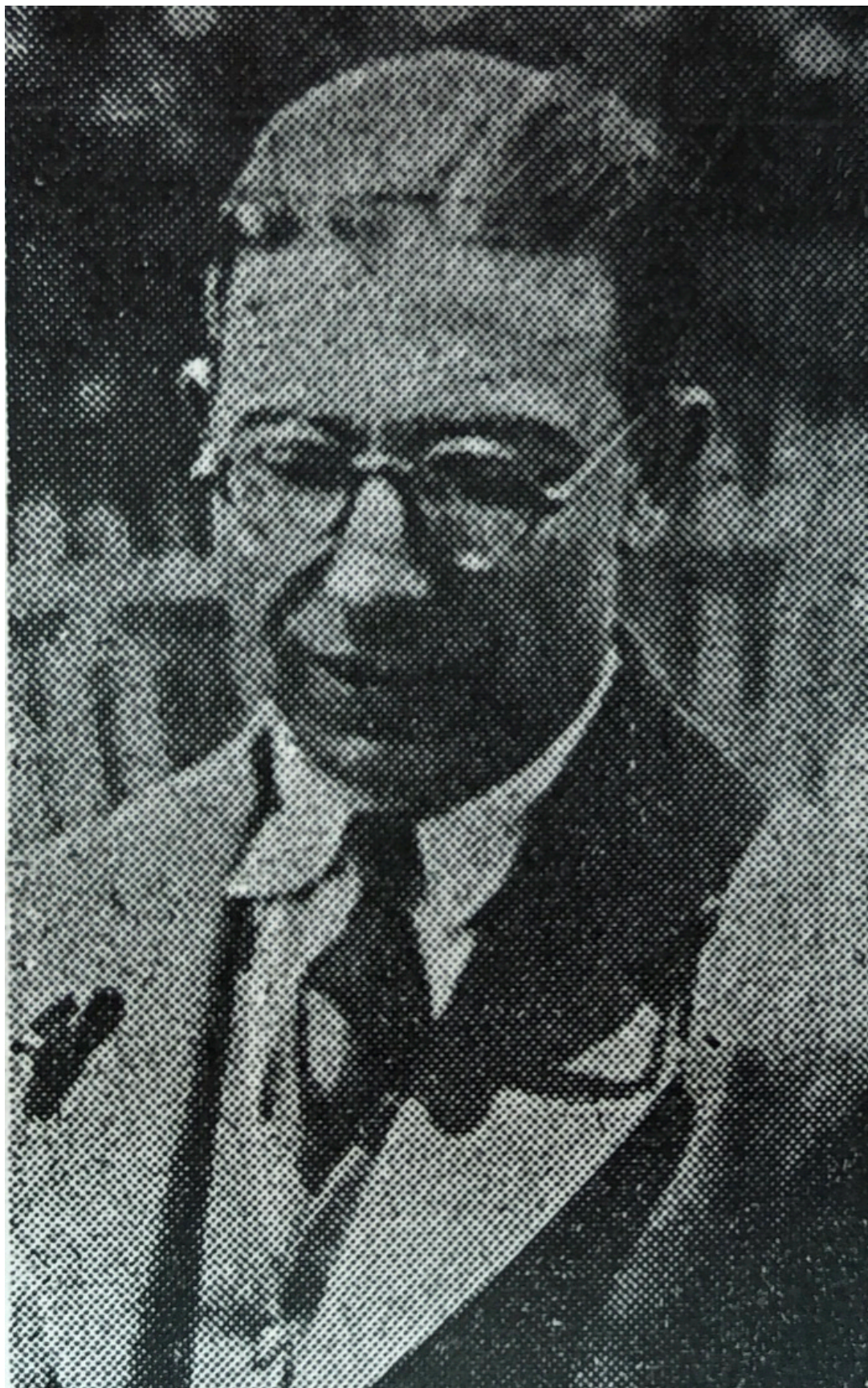
Burial Location: St Patrick Cemetery, Blakely PA

Spouse: None

Children: None

Sub-Section

Photos



Supporting Documents

05-b
9/29/3

Form V. S. No. 5

CERTIFICATE OF DEATH

1. PLACE OF DEATH
County of Lancaster
Township of Mayfield, Pa
Borough of Mayfield, Pa
City of Mayfield

Registration District No. 650
Primary Registration District No. 35-14-41

COMMONWEALTH OF PENNSYLVANIA
DEPARTMENT OF HEALTH
BUREAU OF VITAL STATISTICS

File No. 14216
Registered No. 15

2. FULL NAME Michael Jerome
(a) Residence, No. 544 East 2nd St. Olyphant Ward. 1
(Usual Place of Abode)
Length of residence in city or town where death occurred yrs. mos. ds. How long in U. S., if of foreign birth? yrs. mos. ds.

[If death occurred in a Hospital or Institution give its NAME instead of street and number.]

PERSONAL AND STATISTICAL PARTICULARS

3. SEX M 4. COLOR OR RACE white 5. SINGLE, MARRIED, WIDOWED OR DIVORCED (write the word) single

5a. If married, widowed, or divorced HUSBAND of (or) WIFE of

6. DATE OF BIRTH (month, day and year) Sept 20 1903

7. AGE Years 32 Months 11 Days 11 IF LESS than 1 day hrs. or min.

8. OCCUPATION OF DECEASED
(a) Trade, profession, or particular kind of work Undertaker's assistance
(b) General nature of industry, business or establishment in which employed (or employer)
(c) Name of employer Michael Margatta

9. BIRTHPLACE (city or town) (State or Country) Olyphant

10. NAME OF FATHER Thomas Jerome

11. BIRTHPLACE OF FATHER (city or town) (State or Country) Italy

MAIDEN

12. NAME OF MOTHER Rose De Manno

13. BIRTHPLACE OF MOTHER (city or town) (State or Country) Italy

14. Informant Thomas Jerome
(Address) 544 E. 2nd St. Olyphant

15. Filed Aug 26, 1936 Thomas H. H. H. Registrar

MEDICAL CERTIFICATE OF DEATH

16. DATE OF DEATH Aug 24, 1936
(Month) (Day) (Year)

17. I HEREBY CERTIFY, That I attended deceased from 19 to 19
that I last saw him alive on dead Aug 24
and that death occurred, on the date stated above, at 11:00 P.M.
The CAUSE OF DEATH* was as follows:
compound fracture
of right femur
accident
(duration) yrs. mos. days
CONTRIBUTORY (Secondary) Blow, probably may field Pa
(duration) yrs. mos. days

18. Where was disease contracted 212
If not at place of death?

Did an operation precede death? Date of

Was there an autopsy?

What test confirmed diagnosis? Leucemia M.D. Aug 24 D.O. Aug 24
(Signed) (Address)

* State the DISEASE CAUSING DEATH, or in deaths from VIOLENT CAUSES, state (1) MEANS AND NATURE OF INJURY, and (2) whether ACCIDENTAL, SUICIDAL, or HOMICIDAL. (See reverse side for additional space.)

19. PLACE OF BURIAL, CREMATION OR REMOVAL St. Gathach's Blakely DATE OF BURIAL Aug 28 1936

20. UNDERTAKER M. Margatta ADDRESS Jessup Pa.
(COVER)

REASON RESERVED FOR FILING
WRITE PLAINLY WITH UNFADING INK
ON THIS PERMANENT RECORD
CERTIFICATE OF DEATH
Physicians should state CAUSE
OF DEATH in plain terms so that it may be properly classified. Exact statement of OCCUPATION is very important. See
instructions on back of certificate



Remembrance of first Holy Communion

Michael *Jerome*
 received first Holy Communion in the church of *St. Patrick*
Saint Patrick, Clapham, Va. May 31, 1911
 and the Sacrament of Confirmation
at the residence of the parents



AUGUST 24, 1936

SCRANTON
TIMES

TWO OLYPHANT MEN DIE, THREE COMPANIONS HURT

**Accident Occurs In
Mayfield When Auto
Occupied By Vic-
tims Hooked An-
other Car In Passing
and Crashed Into
Tree — Uprooted
Trunk Crushed Pair
To Death.**

Two Olyphant men were killed and three other persons injured when the automobile in which they were riding figured in a collision with another machine and then crashed into a tree last night at 11:10 o'clock in the 800 block of Lackawanna avenue, Mayfield.

The dead are: Michael Jerome, thirty-two, of 544 East Lackawanna avenue, and Michael Gillespie, twenty-three, of 841 North Valley avenue.

Those injured in the mishap were: Barbara Gillespie, twenty-four, a sister of one of the victims, lacerations of the face and both arms; Betty O'Connor, twenty-four, of 523 East Grant street, Olyphant, deep lacerations of the scalp and possible concussion of the brain, and James Walsh, of 505 South Valley avenue, Olyphant, lacerations of the shoulder and shock.

The three are patients in St. Joseph's Hospital, Carbondale, where their conditions are not regarded as serious.

Hooked Car In Passing.

Chief of Police Walter Grzywacz, of Mayfield, investigated the mishap and reported that the automobile carrying the five young people was traveling south on Lackawanna avenue with Jerome at the wheel of the machine, a Studebaker sedan.

The police official said that Jerome turned his car out to pass a Chevrolet sedan traveling in the same direction and that the Olyphant man's car hooked the left front end of the Chevrolet as he cut back into the

KILLED IN AUTO ACCIDENT



MICHAEL JEROME.



Memories

Chapter Eleven: John Jerome (1)

Biography

John E Jerome

Date of Birth: 4/26/1916

Location of Birth

Education

Occupation

Places Lived

Date of Death: 3/10/1993

Burial Location

Spouse:

Children

Supporting Documents

Photos

Memories

Chapter Twelve: Josephine Jerome (Guidon)

Biography

Date of Birth

Location of Birth

Education

Occupation

Places Lived

Date of Death

Burial Location

Spouse:

Children

Sub-Section

Supporting Documents

Photos

Memories

Chapter Thirteen: Angeline

Jerome

Biography

Date of Birth

Location of Birth

Education

Occupation

Places Lived

Date of Death

Burial Location

Spouse:

Children

Sub-Section

Photos

Supporting Documents

Memories

Chapter Fourteen: Peter Jerome

Biography

Date of Birth

Location of Birth

Education

Occupation

Places Lived

Date of Death

Burial Location

Spouse:

Children

Sub-Section

Supporting Documents

Photos

Memories

Chapter Fifteen: Annie Jerome (Parette)

Biography

Date of Birth

Location of Birth

Education

Occupation

Places Lived

Date of Death

Burial Location

Spouse:

Children

Sub-Section

Supporting Documents

Photos

Memories

Chapter Sixteen: John Jerome (2)

Biography

Date of Birth

Location of Birth

Education

Occupation

Places Lived

Date of Death

Burial Location

Spouse:

Children

Sub-Section

Supporting Documents

Photos

Memories

Chapter Seventeen: Gerald Jerome

Biography

Date of Birth

Location of Birth

Education

Occupation

Places Lived

Date of Death

Burial Location

Spouse:

Children

Supporting Documents

Photos

Memories

Chapter Eighteen: Leo Jerome

Biography

Date of Birth

Location of Birth

Education

Occupation

Places Lived

Date of Death

Burial Location

Spouse:

Children

Supporting Documents

Photos

Memories

Endnotes